

PRINTER DRIVER GUIDE

(CPD9550M Ver. 2.00)

Macintosh, Apple, and Mac OS are trademarks of Apple Computer, Inc.
Adobe, Adobe Photoshop are registered trademarks of Adobe Systems.

The various software packages mentioned in this manual are the registered trademarks of their respective companies.

Refer to the following web site to check the latest version of the printer driver.
<http://www.MitsubishiElectric.co.jp/vcp>

System requirements

Computer	:PowerMacintosh G4, G5, PowerBookG4, iMac
Main storage memory	:128 Mbytes or more
Hard disk	:Empty capacity 256 Mbytes or more
Operating system	:10.3.9 or later *2
USB cable	:Be sure to use a cable 2m or under.

*1 CP9550DW supports the USB 2.0 (Hi-Speed USB) interface.

As USB 2.0 is completely upwardly compatible with USB 1.1, CP9550DW can be connected with a personal computer on which USB1.1 interface is available.

When you use CP9550DW with USB 2.0 (Hi-Speed USB), the personal computer has to support USB 2.0 (Hi-Speed USB).

For the compatibility of the personal computer with USB 2.0 (Hi-Speed USB), ask the manufacturer of the personal computer.

*2 This printer driver version 2.00 or later supports UniversalBinary.

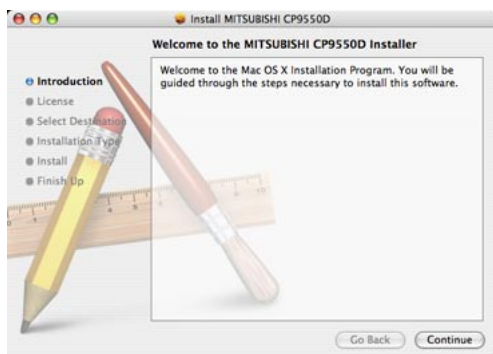
This printer driver is operable either on Intel-based MacOSX or PowerPC-based MacOSX.

Installation

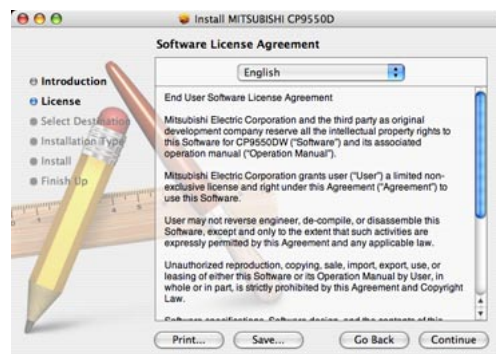
Administrator authority is required to install this printer driver.

When the printer driver of older version has been installed, uninstall it before installing this driver.

- 1) Start your Macintosh.
- 2) Double-click on "MITSUBISHI CP9550D.pkg" of the MacOSX folder.
- 3) Click "Continue" button in the "Install MITSUBISHI CP9550D". (Fig.1)
- 4) Read the Software License Agreement and click "Continue" button. (Fig.2)

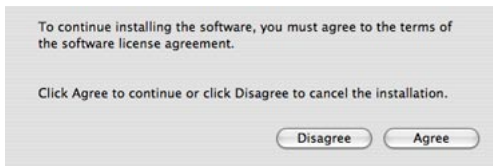


<Fig.1>



<Fig.2>

- 5) When you agree with the terms and conditions of the Agreement, click “Agree”. (Fig.3)
- 6) Select the destination of the driver and click “Continue” button. (Fig.4)

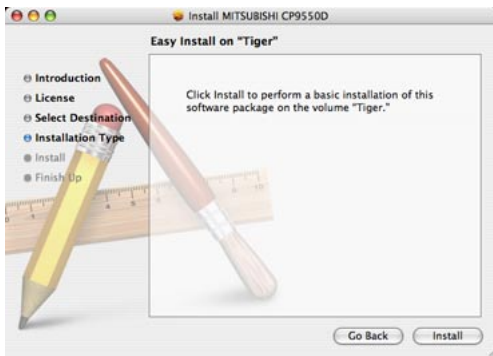


<Fig. 3>

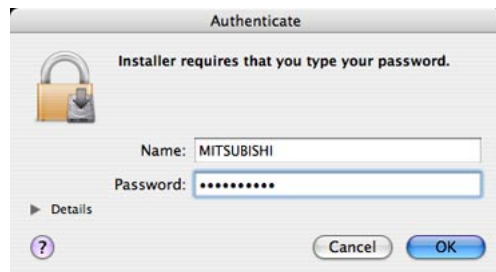


<Fig. 4>

- 7) Click “Install” button.(Fig.5)
- 8) Enter a name and password, and click “OK” button. (Fig.6)



<Fig. 5>

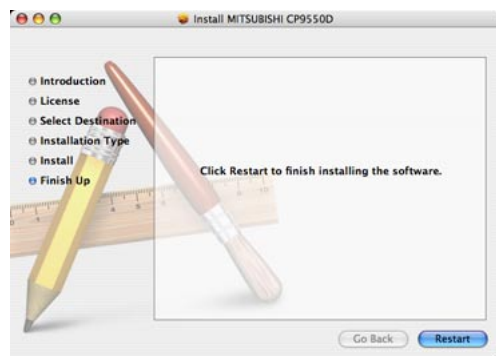


<Fig. 6>

- 9) Click “Continue Installation”. (Fig.7)
- 10)Click “Restart” to restart the personal computer. (Fig.8)



<Fig. 7>



<Fig. 8>

- 11) Turn on the printer and connect it with the personal computer.
- 12) Double-click "Printer Setup Utility" of "Utilities" folder in the "Applications" folder. (Fig. 9)
- 13) The CP9550D is automatically added to "Printer List". (Fig. 10)



<Fig.9>



<Fig.10>

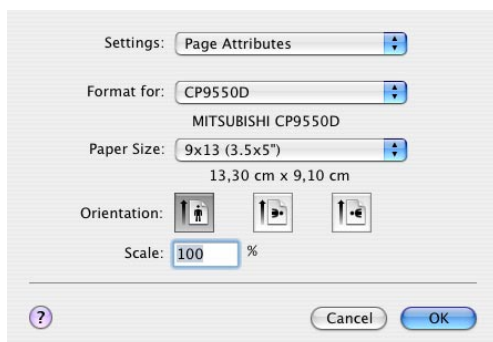
Uninstallation

Operate the following procedures to uninstall the printer driver.

- 1) Start "Terminal".
- 2) When you do not have administrator authority, obtain it by "su" command.
- 3) Go to the directory where the uninstalls script is stored and execute the script (Rem9550.sh).
./Rem9550.sh
- 4) When a password is required, enter the password for the administrator.
- 5) When uninstallation is completed successfully, the following message is displayed.
Uninstallation was completed.
Is a computer rebooted? (Y/N):
- 6) Enter "Y" or "y" to reboot the computer.
If the computer is not rebooted automatically, exit the ongoing applications and reboot the computer manually.

Function explanation

1. Paper Setting dialog



<Fig.11 Page Setting dialog >

1) Paper Size

The size of paper is selected.

The number of print pixels for each paper size is shown in the right table.

When using the paper for post card, select 10x15(4x6”).

2) Orientation

The direction of paper is set.

This is the standard setting function of the operating system.

3) Scale

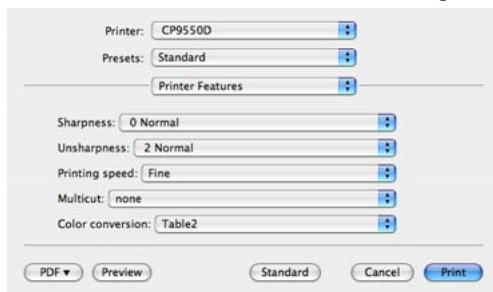
Enlargement scale is set. (Range : 25-400%)

This is the standard setting function of the operating system.

Paper size	Print pixel
9x13(3.5x5")	1240*1812
10x15(4x6")	1416*2152
13x18(5x7")	1812*2452
15x20(6x8")	2152*2792
15x21(6x8.5")	2152*2956
15x23(6x9")	2152*3146

2. Print Setting dialog

Select “Printer Features” of “Print Setting” dialog to carry out the following settings.



<Fig.12 Print Setting dialog>

1) Sharpness

none / -3 / -2 / -1 / 0 / 1 / 2 / 3

Level of outline correction is changed.

none :Not perform the outline correction.

-3 to 3 :The value is smaller, the outline becomes softer.
The value is larger, the outline becomes sharper.

2) Unsharpness

none / 0 / 1 / 2 / 3 / 4

The image is softened.

none :Not soften the image.

0 to 4 :The value gets larger, the image gets softer.

3) Printing speed

Fine / SuperFine / FineDeep

The printing speed can be changed.

FineDeep is not available on the printer having certain serial numbers.

Refer to “12)Printing speed setting” of “Notes”.

4) Multicut

none / Type 1 / Type 2

When "15x20(6x8)" is selected in the paper size, this function is available.

For making the image data, refer to "Operating directions for customer's purpose".

5) Color conversion

none / Table1 / Table2

none :Color conversion is not performed.

Table1, Table2 :Color conversion is performed.

2. Error indication

No.	Error dialog message	Operation
(1)	The ink ribbon is not standard.	When an error is resolved, printing restarts.
(2)	Ink ribbon empty. After removing Error, press the FEED & CUT button.	The buttons in the error dialogs work as standard operating system. The buttons as follows are displayed.
(3)	Paper empty.	Delete Job : Deletes the job during printing.
(4)	Paper end.	Stop All Jobs : All the jobs in the spooler, including the jobs during printing become paused.
(5)	Ink ribbon end.	
(6)	Ink ribbon is not correctly installed.	
(7)	Ink ribbon and paper type do not match.	Stop Job : Stops the job during printing. When any job is in the spooler, the job starts.
(8)	Paper size of printer driver and ink ribbon type do not match.	
(9)	Open and close the door.	
(10)	Paper jam. After removing Error, press the FEED & CUT button.	
(11)	Paper jam. After removing Error, open and close the door.	
(12)	Door is opened.	
(13)	Mechanical Error. After removing Error, press the FEED & CUT button.	
(14)	Mechanical Error. After removing Error, open and close the door.	
(15)	Something is wrong with the printer.	
(16)	The printer does not respond. Turn the printer Off and then On again, and try again.	
(17)	The printer was turned off while printing. Press the FEED & CUT button.	

When no error message is displayed on the monitor and printing is not carried out, check the indicators on the front of the printer.

For the indicator on the printer, see the operation manual of CP9550DW.

Notes

- 1) Secure of Hard disk for spool file
Secure the capacity of Hard disk for spool file enough for the printer operation and the number of printing sheets.
The printing cannot be correctly carried out when the capacity is running short.
The drive for spool file is the same drive as the system drive usually.
- 2) Operation of the printer
Refer to the operation manual of the printer.
Do not turn off the power switch during data transfer or print.
If you turn off the power switch, restarting of a computer may be needed.
When deletion of a printing data cannot be performed, restarting of a computer is required.
- 3) About connection of a computer and a printer
Do not disconnect the interface cable during data transfer.
If the interface cable is disconnected, connect it after the DATA indicator on the printer stops blinking. If the cable is connected before the DATA indicator stops blinking, the printer driver may not work correctly.
- 4) System requirements for USB interface
Use the computers that are USB-guaranteed by the manufacturer.
CP9550DW supports the USB 2.0 (Hi-Speed USB) interface.
As USB 2.0 is completely upwardly compatible with USB 1.1, CP9550DW can be connected with a personal computer on which USB1.1 interface is available.
When you use CP9550DW with USB 2.0 (Hi-Speed USB), the personal computer has to support USB 2.0 (Hi-Speed USB).
For the compatibility of the personal computer with USB 2.0 (Hi-Speed USB), ask the manufacturer of the personal computer.
- 5) Connection of USB cable
When you take out and insert a USB cable after installation of a printer driver, wait 10 seconds or more after extracting a cable.
If the cable is reinserted without leaving an interval, the printer may not operate normally.
- 6) Print job
Do not delete the print job in the spooler during data transfer. When deleting it, do not start printing until the printer becomes to the initial status.
- 7) Number of prints
In some application, the number of prints set by the printer driver does not work. Set the number of prints from the print dialog box of the application.
- 8) Errors during printing
When an error occurs during printing, it may not be displayed on the monitor. Check the indicator on the front of the printer and take the countermeasure, and then start printing procedure again. For the indication by the indicator of the printer and the countermeasures, see the operation manual of the printer.
- 9) Print on the post card size paper
When using the paper for post card, select 10x15(4x6") from the Paper Size.
- 10) When "Restart" is carried out from the job window without resolving an error after "Job stop" button in the error dialog is clicked, the error dialog may not be displayed. In this case, select "Job stop" to resolve the error, then click "Job start" to start printing.
- 11) "Add" of the "Printer List"
In some version of MacOSX, you may not print images with the printer registered by the "Add" button. Make the computer recognize the printer by the procedure described in "Installation".

12) Printing speed setting

Available settings differ depending on printers as described below.

Printer serial number	Printing speed setting
1 - 15000	FineDeep is not available.
300001 - 300600	Only Fine and SuperFine are selectable.
15001 - 300000	Fine, SuperFine and FineDeep are selectable.

Operating directions for customer's purpose

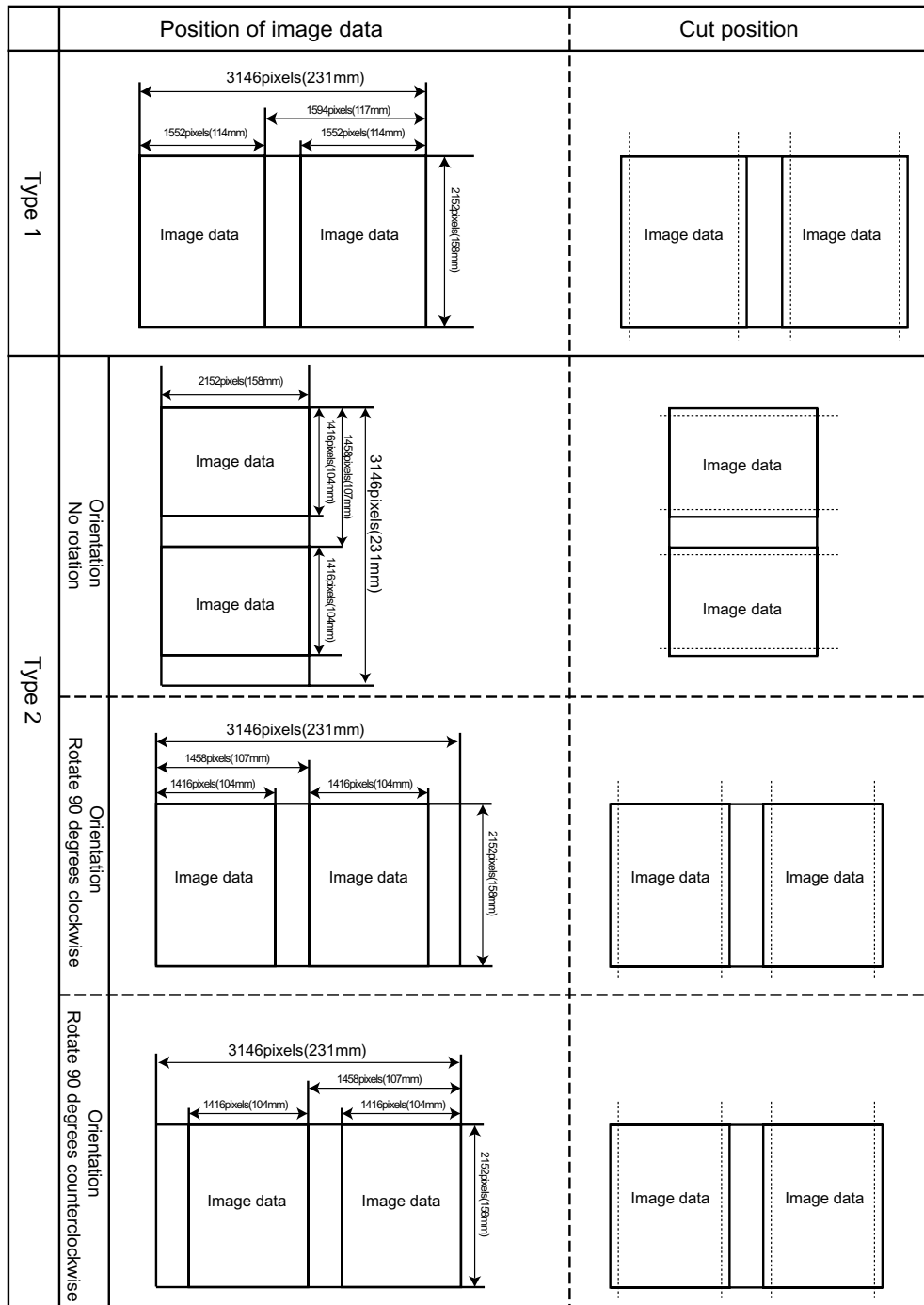
Making image data when multicut function is set

Two kinds of multicut are selectable when 15x23(6x9") size paper is selected.

Put two images on the image data of 15x23(6x9") size (3146x2152 pixels).

The paper is cut at the specified position.

When Type 2 is selected, change the image putting position by the setting of Page Setting dialog.





Prohibition matter



We prohibit Reverse Engineering, decompiling or reverse assembling of this driver software.



Exemption from responsibility



Occasionally, this software does not operate normally depending on operating environment. Moreover, Mitsubishi Electric Co. will not assume any responsibility for damage (including, but not limited to, lost profit or damage caused from special circumstances etc.) occurring during the use of this driver.